

Litelines

| | |
|------------|----------|
| Catalog #: | |
| Job: | |
| Type: | Voltage: |

MB400 Series

Structural

4" round metallic bollard with (3) top cap options and (5) optical choices.

Luminaire

Reflector, louvers and refractors shall provide optimum lighting performance and weathertite operation.

Electrical

Ballast and electrical components are "UL Listed," factory prewired and mounted to a rigid support for suspension within the concrete base. A quickdisconnect electrical plug will be provided for easy installation and servicing.

Surface

The precast concrete shall be available in the following finishes: Mold Finish ("MF"), Sandblast ("SB") or Exposed Aggregate ("EA"). Consult factory for special aggregates and surface textures.

Luminaire Color

The luminaire shall be available in the following standard colors: Light Grey (GY), Black (BK), White (WH), Dark Bronze (BU), and Special (SP). Consult factory for other colors.

Mounting

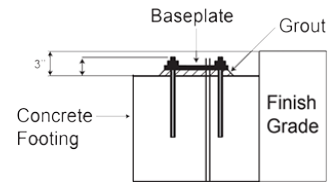
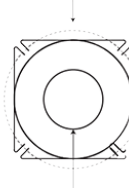
Anchor base bollards "AB" are supplied with plated anchor bolts for installation into a concrete footing.

Dimensions

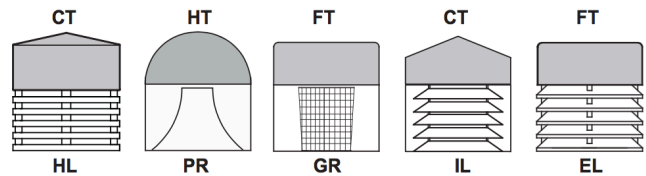


Mounting

9.5" Bolt Circle



Cap Options



Ordering Information

Ordering Example: MB400-FT-HL-150-HPS-120-18-AB-GY-HSS

