

# Litelines

Catalog #:	
Job:	
Type:	Voltage:

## MB700 Series

### Structural

7" round metallic bollard with (3) top cap options and (5) optical choices.

### Luminaire

Reflector, louvers and refractors shall provide optimum lighting performance and weathertite operation.

### Electrical

Ballast and electrical components are "UL Listed," factory prewired and mounted to a rigid support for suspension within the concrete base. A quickdisconnect electrical plug will be provided for easy installation and servicing.

### Surface

The precast concrete shall be available in the following finishes: Mold Finish ("MF"), Sandblast ("SB") or Exposed Aggregate ("EA"). Consult factory for special aggregates and surface textures.

### Luminaire Color

The luminaire shall be available in the following standard colors: Light Grey (GY), Black (BK), White (WH), Dark Bronze (BU), and Special (SP). Consult factory for other colors.

### Mounting

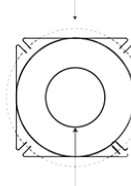
Anchor base bollards "AB" are supplied with plated anchor bolts for installation into a concrete footing.

### Dimensions

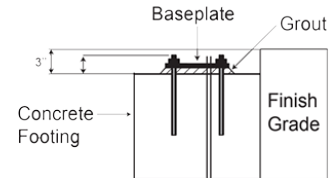


### Mounting

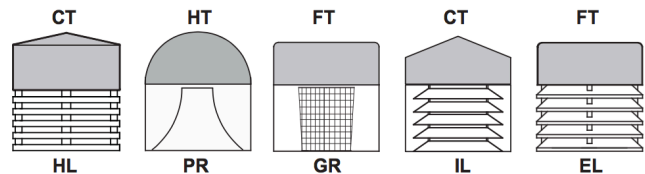
9.5" Bolt Circle



4" Conduit Opening



### Cap Options



## Ordering Information

Ordering Example: MB700-FT-HL-150-HPS-120-18-AB-GY-HSS

