

Catalog #:	
Job:	
Type:	Voltage:

### Structural

Round concrete bollard cast from natural stone Aggregates, "Portland Cement" and fibrillated fiber. Conforms to ASTM standards.

### Luminaire

Cast aluminum louvers and a clear glass lens shall provide optimum lighting performance and weathertite operation.

### Electrical

Ballast and electrical components are "UL Listed," factory prewired and mounted to a rigid support for suspension within the concrete base. A quickdisconnect electrical plug will be provided for easy installation and servicing.

### Surface

The precast concrete shall be available in the following finishes: Mold Finish ("MF"), Sandblast ("SB") or Exposed Aggregate ("EA"). Consult factory for special aggregates and surface textures.

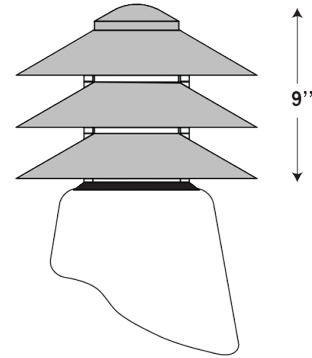
### Color

The concrete shall be available in the following standard colors: Natural Grey Cement (N), Brown (BR), White (WH), Dark Bronze (BU), Copper (CO), and Special (SP). Consult factory for other colors.

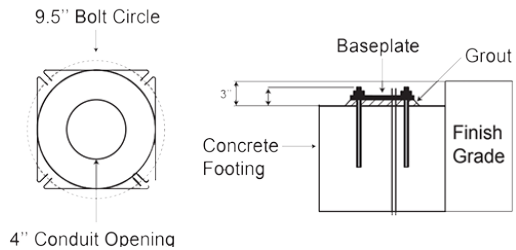
### Mounting

Anchor base bollards "AB" are supplied with 3/8" plated anchor bolts for installation into a concrete footing (by others). Consult factory for other mounting configurations.

### Dimensions



### Mounting



## Ordering Information

Ordering Example: TC736-75-HPS-120-24-AB-GY-N-MF-HSS

TC736	Series	Watts	Volts	Height	Anchor	Luminaire Color	Concrete Color	Concrete Finish	Options
		13-75	120 208 240 277	24" 30" 36" 42"	AB Anchor Base DB Direct Burial	GY Light Grey BK Black WH White BZ Dark Bronze SP Special	N Natural BR Brown WH White BU Dark Bronze CO Copper SP Special	MF Mold Finish SB Sandblast EA Exposed Aggregate	HSS House Side Shield LAMP Lamp Installed PC Photocell Installed GS Glaze & Seal "Wet Look" Topcoat AG Anti-Graffiti Topcoat RECP Receptacle SP Special