

Catalog #:	
Job:	
Type:	Voltage:

Structural

Round concrete bollard cast from natural stone Aggregates, "Portland Cement" and fibrillated fiber. Conforms to ASTM standards.

Luminaire

Metallic components and a sealed white acrylic lens shall provide optimum lighting performance and weathertite operation. A polycarbonated lens is optional.

Electrical

Ballast and electrical components are "UL Listed," factory prewired and mounted to a rigid support for suspension within the concrete base. A quickdisconnect electrical plug will be provided for easy installation and servicing.

Surface

The precast concrete shall be available in the following finishes: Mold Finish ("MF"), Sandblast ("SB") or Exposed Aggregate ("EA"). Consult factory for special aggregates and surface textures.

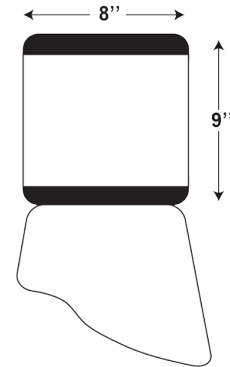
Color

The concrete shall be available in the following standard colors: Natural Grey Cement (N), Brown (BR), White (WH), Dark Bronze (BU), Copper (CO), and Special (SP). Consult factory for other colors.

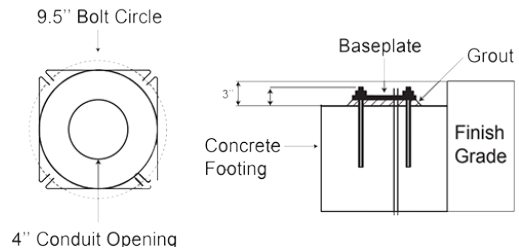
Mounting

Anchor base bollards "AB" are supplied with 3/8" plated anchor bolts for installation into a concrete footing (by others). Consult factory for other mounting configurations.

Dimensions



Mounting



Ordering Information

Ordering Example: TCB836SP-75-HPS-120-24-AB-GY-N-MF-HSS

TC836SP										
Series	Watts		Volts	Height	Anchor		Concrete Color		Concrete Finish	Options
	13-75		120 208 240 277	24" 30" 36" 42"	AB Anchor Base DB Direct Burial		N Natural BR Brown WH White BU Dark Bronze CO Copper SP Special		MF Mold Finish SB Sandblast EA Exposed Aggregate	HSS House Side Shield LAMP Lamp Installed GS Glaze & Seal "Wet Look" Topcoat AG Anti-Graffiti Topcoat RECP Receptacle SP Special
		Lamp Type				Luminaire Color				
		HPS High Pressure Sodium MH Metal Halide MV Metal Vapor FL Fluorescent				GY Light Grey BK Black WH White BZ Dark Bronze SP Special				