

# Litelines

Catalog #:	
Job:	
Type:	Voltage:

## TCB900 Series

### Structural

9" Concrete bollard with (6) top cap options and (5) optical choices.

### Luminaire

Reflector, louvers and refractors shall provide optimum lighting performance and weathertite operation.

### Electrical

Ballast and electrical components are "UL Listed," factory prewired and mounted to a rigid support for suspension within the concrete base. A quickdisconnect electrical plug will be provided for easy installation and servicing.

### Surface

The precast concrete shall be available in the following finishes: Mold Finish ("MF"), Sandblast ("SB") or Exposed Aggregate ("EA"). Consult factory for special aggregates and surface textures.

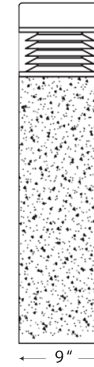
### Color

The concrete shall be available in the following standard colors: Natural Grey Cement (N), Brown (BR), White (WH), Dark Bronze (BU), Copper (CO), and Special (SP). Consult factory for other colors.

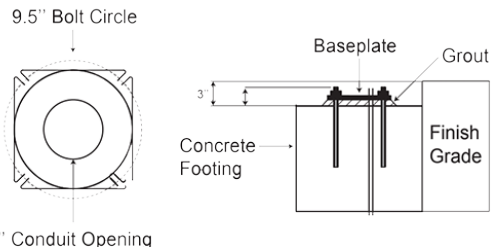
### Mounting

Anchor base bollards "AB" are supplied with plated anchor bolts for installation into a concrete footing.

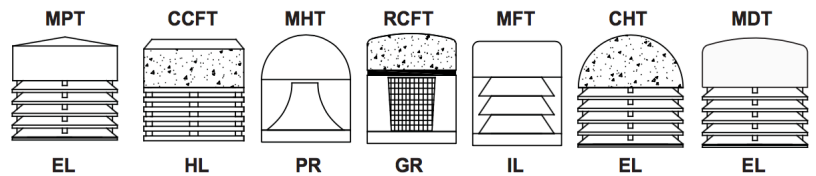
### Dimensions



### Mounting



### Cap Options



### Ordering Information

Ordering Example: TCB900-MPT-HL-150-HPS-120-18-AB-NA-N-MF-HSS

TCB900											
<b>Series</b>	<b>Watts</b>	<b>Lamp</b>	<b>Volts</b>	<b>Height</b>	<b>Anchor</b>	<b>Concrete Color</b>	<b>Options</b>	<b>Top Style</b>	<b>Reflector</b>	<b>Luminaire Color</b>	<b>Concrete Finish</b>
	7 - 150	HPS MH MV FL	120 208 240 277	18" 24" 30" 36" 42"	AB Anchor Base DB Direct Burial	N Natural BR Brown WH White BU Dark Bronze CO Copper SP Special	HSS House Side Shiled LAMP Lamp Installed PC Photocell Installed RECP Receptacle SP Special	MPT Metal Pointed Top CCFT Chamfered Concrete Flat Top MHT Metal Hemi-Top MFT Metal Flat Top CHT Concrete Hemi-Top RCFT Radius Concrete Flat Top	HL Horizontal Louver PR Pericline Reflector EL External Louver IL Internal Louver GR Glass Refractor	NA Brushed Aluminum BK Black WH White CO Copper SP Special	MF Mold Finish SB Sandblast EA Exposed Aggregate